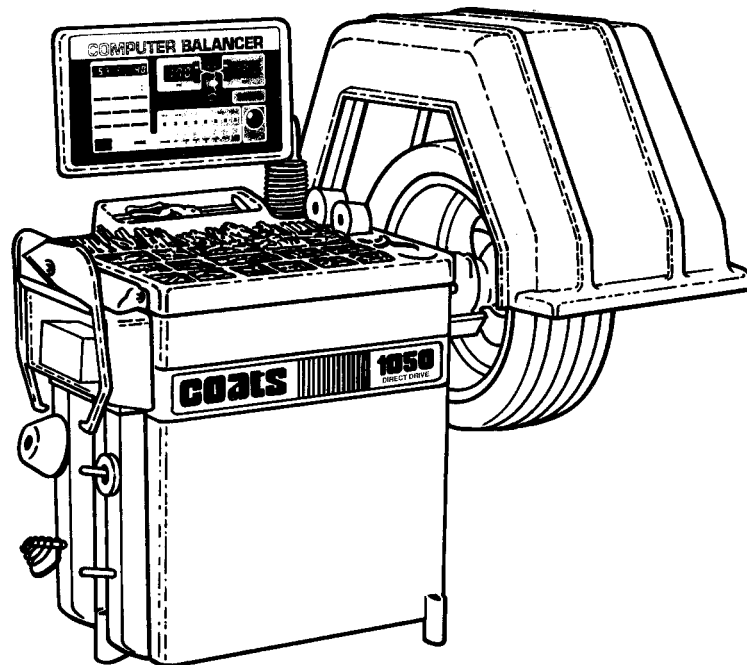


COATS®

950/1025/1050/1055

Solid State

WHEEL BALANCER



PANZITTA SALES & SERVICE
72 George Avenue
Wilkes-Barre, PA 18705
570-822-6720 800-822-6720
www.panzittasales.com

Installation Instructions
Operating Instructions
Safety Instructions
Maintenance Instructions
with Parts Identification

READ these instructions before placing unit in service KEEP these and other materials delivered with the unit in a binder near the machine for ease of reference by supervisors and operators.

HENNESSY INDUSTRIES, INC.

P.O. Box 3002, 1601 J. P. Hennessy Drive, LaVergne, TN USA 37086 615/641-7533 800/688-6359

HENNESSY INDUSTRIES INC. Manufacturer of AMMCO®, COATS® and BADA® Automotive Service Equipment and Tools.

Manual Part No.: 111868

Revision: 3/00 rev. 4

Direct Drive

Parts Identification

Detailed parts listing and exploded parts diagrams are provided on the following pages to assist with installation, service, and parts replacement.

PANZITTA SALES & SERVICE
72 George Avenue
Wilkes-Barre, PA 18705
570-822-6720 800-822-6720
www.panzittasales.com

Models 950, 1025, 1050 & 1055 Parts Id

ITEM NO.	DESCRIPTION	PART NO.	DESCRIPTION
1	301063 Screw, #6-32 X 1/2" PHM	35	110912 Pin, #10-32 Spring Plunger
2	111886 PCB Assembly	36	308554 Roller
3	110721 Touch Panel, 1050	37	301537 Screw Shoulder, 5/16 x .500 SHC
4	110947 Touch Panel, 950	38	111645 Scale
5	111035 Weight Tray	39	308550 Arm
6	111554 Decal, "Caution"	40	100602 Roll Pin
7	314005 Decals, Weight Tray Bins	41	308078 Rod
8	111064 Shield, Weight Tray	42	110807 Bushing, Front
9	106304 Nut, Tinnerman 1/4-20	43	143956 Retainer
10	106301 Screw, 1/4" Hex Self-Tap	44	110168 Stop
11	111542 Screw, #8-32 X 5/8" SEM	45	110966 Instruction Card, Cal/MM
12	110537 Panel, Capacitor	46	110806 Bracket
13	111032 Washer, 1/4 Fender	47	110913 "D" Cable
14	111308 Shield Motor Cover	48	110914 "D" Pulley
15	111033 Side Pocket	49	143169 Nut, 1/4-20 Flange
16	112356 Capacitor	50	308074 Bushing, Rear
17	112224 Jumper, Assembly	51	308023 Spring
18	110560 Screw, #8-32x3/4	52	301032 Washer 3/8, Flat
19	110957 Cover, Accessory Peg	53	301142 Washer, 1/4 Lock
20	111030 Sleeve, Accessory Peg	54	110956 Velcro Patch, Loop
21	110818 Weldment, Acc. Peg Bracket	55	308536 Gasket, Motor
22	110919 Assembly, "D" Pot	56	120446 Decal, Rotation
23	110918 "A" Pot Assembly	57	110962 Cover, Motor
24	308545 "A" Spring	58	111048 Chassis
25	110915 "A" Pulley	59	120325 Screw, 5/16-18x1 WHC
26	308555 Bracket, Dia Cast, Arm	60	110955 Velcro Patch, Hook
27	110917 Shaft, Pulley	61	111038 Latch, Instruction Card
28	308074 Bushing, Arm Rear	62	112182 Plate, Flex
29	110916 "A" Cable	63	106302 Scr 3/8-16 x .875 HHC Whiz Lock
30	301534 Screw, 1/4-20x1 HH Grade 5	64	110430 Cradle, Motor
31	308535 Stop, Front	65	110994 Assembly, Fan
32	308527 Rod	66	308817 Shutter, Rotary
33	301143 Nut, 1/4-20 Hex	67	107635 Washer, Flat
34	308546 "D" Spring		
	110911 Nut, #10-32 Hex		

PANZITTA SALES & SERVICE
72 George Avenue
Wilkes-Barre, PA 18705
570-822-6720 800-822-6720
www.panzittasales.com

PANZITTA SALES & SERVICE

72 George Avenue

Wilkes-Barre, PA 18705

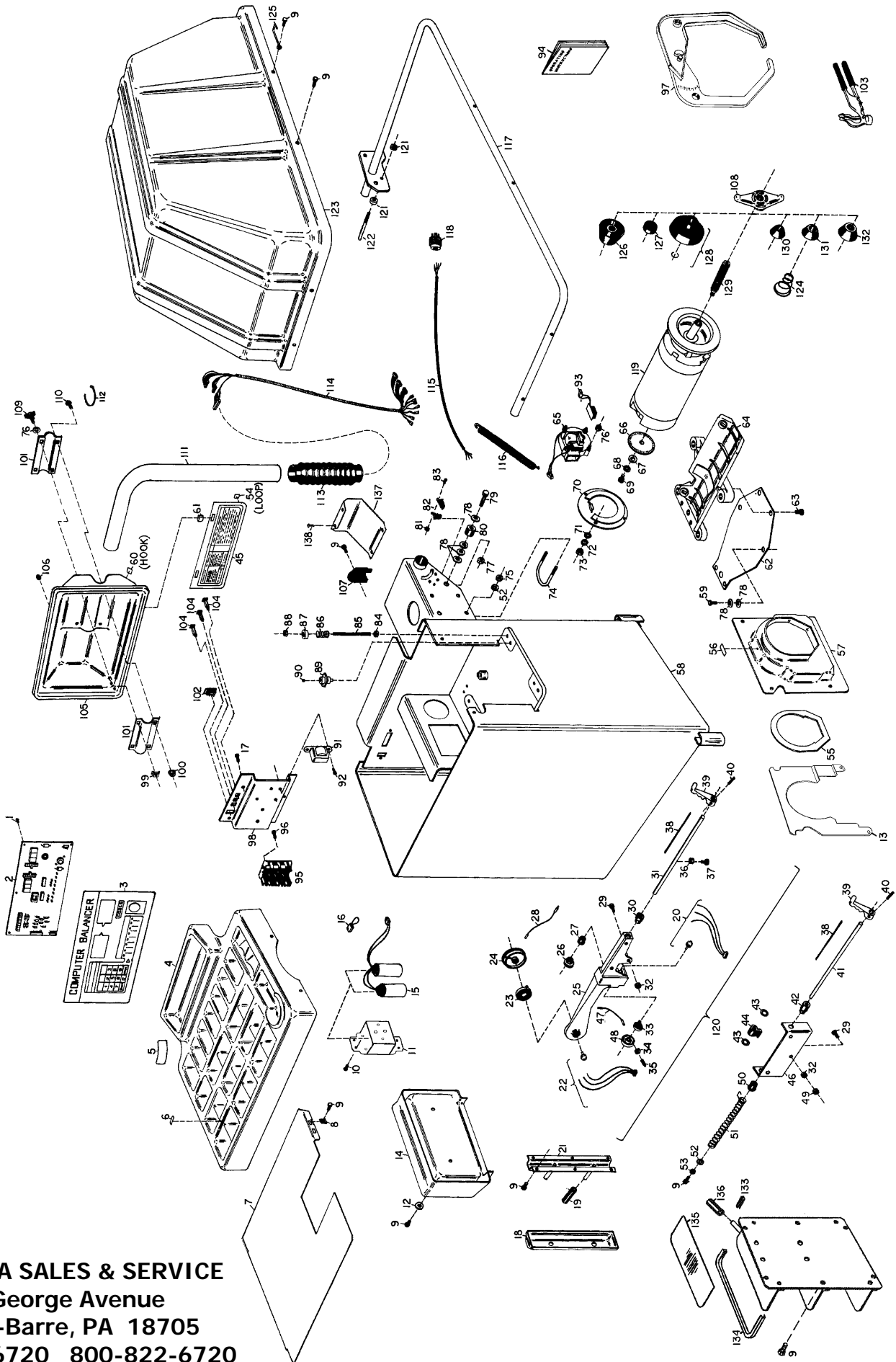
570-822-6720 800-822-6720

www.panzittasales.com

ITEM NO.	PART NO.	DESCRIPTION	ITEM NO.	PART NO.	DESCRIPTION
68	104200	Washer, 3/8 Lock, Internal Tooth	104	111218	Breaker, 2 Amp
69	301016	Bolt, Shoulder, 3/8x3/8	105	111031	Pod
70	308513	Cover, Bell, Rear End	106	111055	Nut, #6-32 Acorn
71	301805	Washer, #10 Flat	107	111029	Cover, Rear Harness
72	301806	Washer, #10 Spring Lock	108	110543	Hub Nut
73	301804	Nut, #10-32 Hex	109	110817	Knob
74	110789	Bolt, 5/16-18 "U"	110	110823	Bolt, 3/8-16 Carriage
75	181183	Nut, 5/16-18 Nyloc	111	110805	Support, Pod Tube
76	301084	Nut, #8-32 Kep	112	111056	Tie, Cable, 11"
77	301122	Nut, 1/2-13 Hex	113	110800	Cover, Pod Tube
78	301121	Washer, 1/2 Flat	114	112839	Harness, Signal
79	301120	Bolt, 1/2-13x2-1/2 HH	115	143127	Cord, Power
80	309008	Stop, Hood, Rubber	116	308062	Spring, Hood
81	301066	Nut, #6-32 Kep	117	112843	Bar, Hood
82	144114	Switch, Mechanical	118	140786	Plug, 220V, 3 PH
83	23603	Screw, #6-32x1" LG	305076		Plug, 220V, 1 PH
84	301033	Nut, 3/8-16 Hex	119	112945	Motor 950/1050
85	108727	Rod, Threaded	120	110920	Distance Gauge Assembly
86	307008	Spring, Piezo	121	24724	Nut, 5/16-18 Flange, Serrated Face
87	308036	Retainer, Piezo Spring	122	112731	Rod-Actuator, Switches
88	301035	Nut, 3/8-16 Nyloc	123	308060	Hood
89	111036	Piezo Assy.	124	308820	Spring, Back Cone
90	301017	Ball, 1/2, Steel	125	111021	Hanger, Caliper
91	111894	Transformer	126	308095	Adapter, Large
92	301082	Screw, #8-32x1/2 PHM	127	308105	Ring, No-Mar
93	110923	Assembly, Encoder	128	110542	Pressure Cup
94	111868	Operations Manual	129	308171	Stub Shaft
95	111879	Motor Control Board	130	110410	Cone, Small
96	112208	Standoff, 8-32 male, 3/8"	131	110411	Cone, Medium
97	309011	Caliper Assembly	132	110412	Cone, Large
98	110821	Power Panel	133	111918	Trim-Short Strip
99	143044	Nut, 3/8-16 Tinnerman	134	111919	Trim-Long Strip
100	106303	Nut, 3/8-16 WH	135	111920	Pad
101	110795	Clamp, Pod 102	136	112199	Sleeve
102	305802	Switch, ON/OFF	137	111859	Panel Assembly
103	111515	Weight Hammer/Pliers	138	112165	Pop Rivet

Direct Drive

PANZITTA SALES & SERVICE
72 George Avenue
Wilkes-Barre, PA 18705
570-822-6720 800-822-6720
www.panzittasales.com



PANZITTA SALES & SERVICE
 72 George Avenue
 Wilkes-Barre, PA 18705
 570-822-6720 800-822-6720
 www.panzittasales.com

PANZITTA SALES & SERVICE
72 George Avenue
Wilkes-Barre, PA 18705
570-822-6720 800-822-6720
www.panzittasales.com